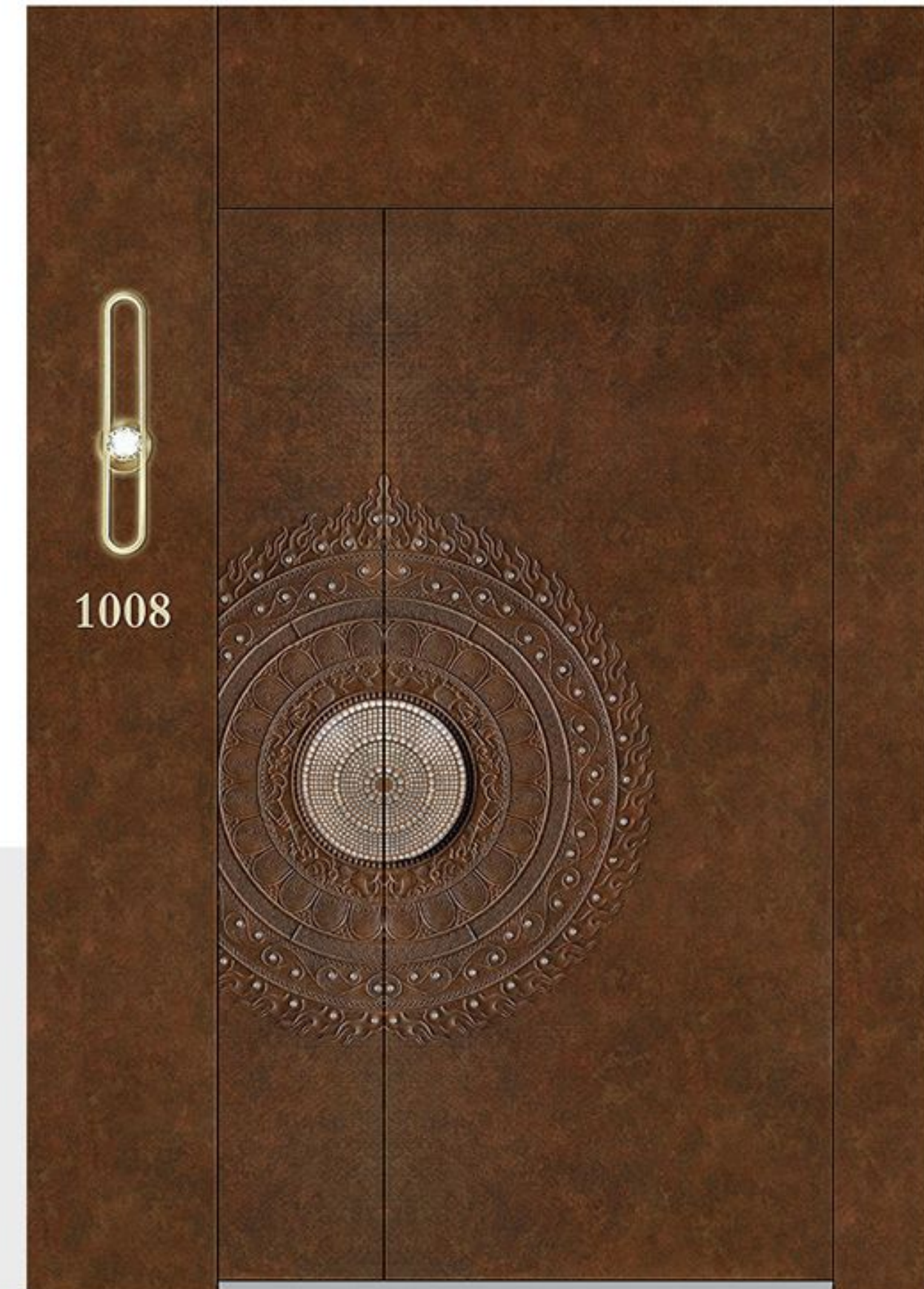


# Sample of what is offered

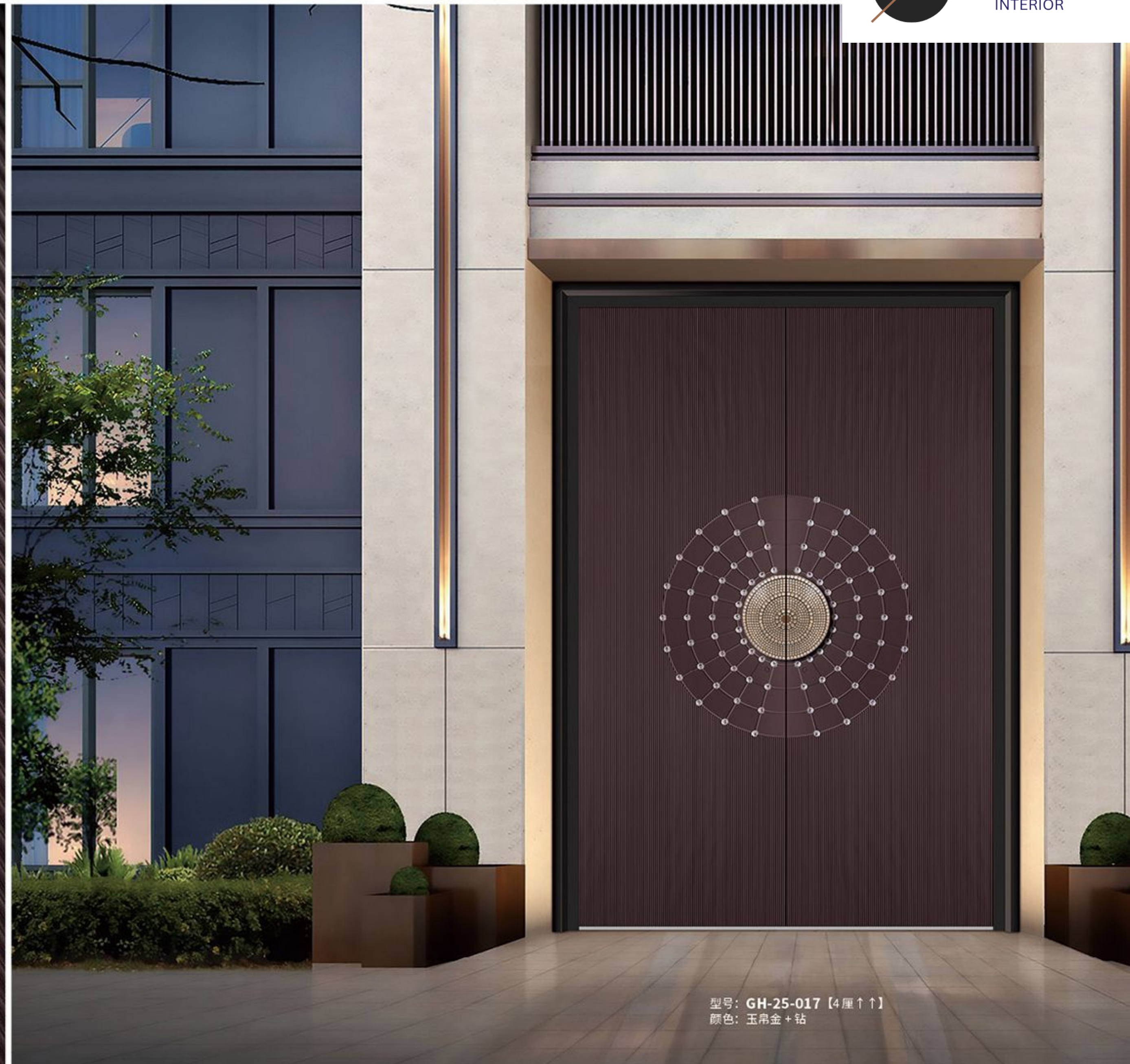
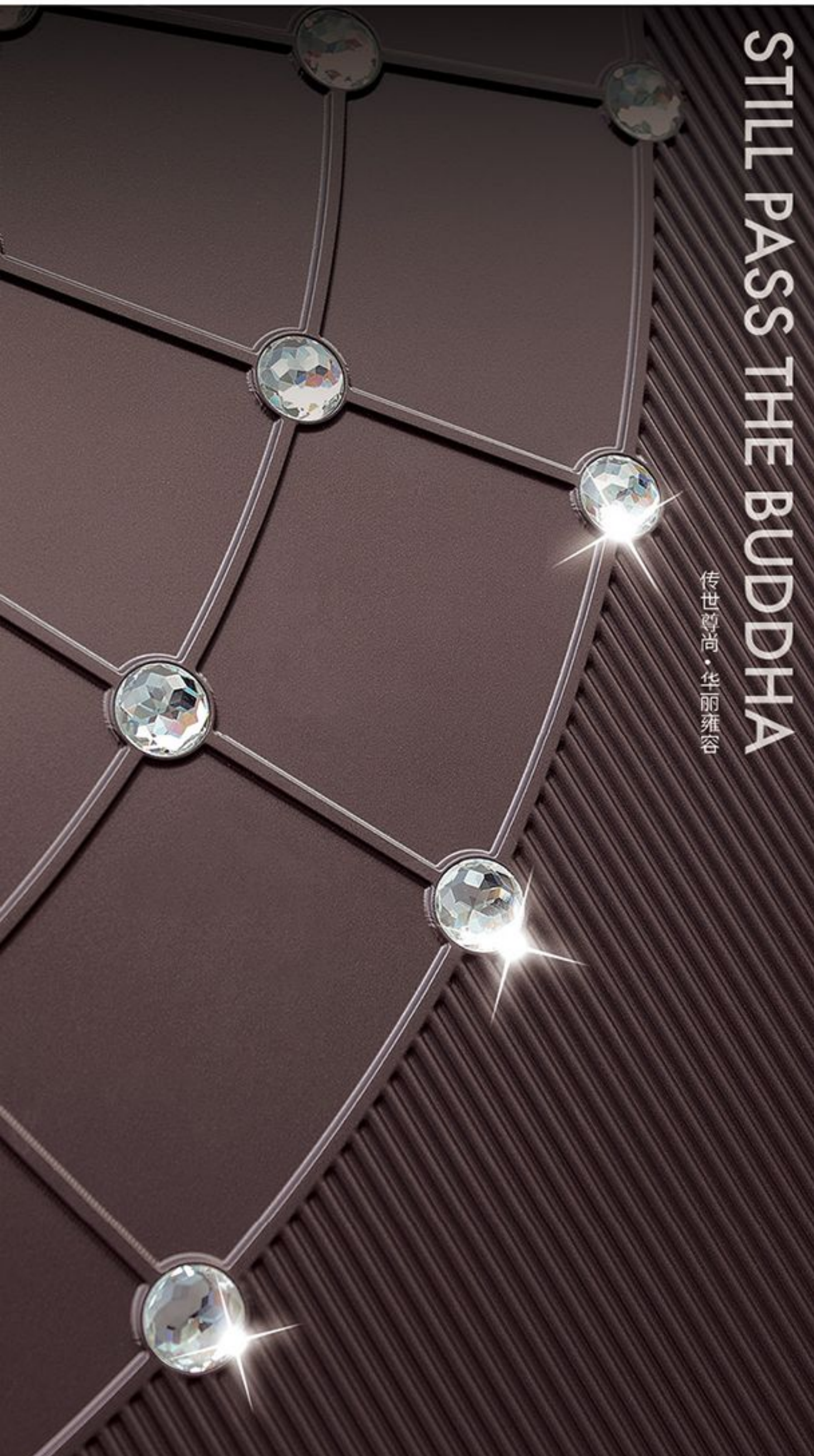


## 融入自然肌理 营造沉浸于艺术与自然的意境

自然的肌理、先锋的设计、前瞻的灵感，光影于璀璨质感间流淌蔓延出万千想象，辉映居者理想中的色彩，为居者带来感官之悦；入户门作品设计无论是其卓越的品质，还是其创新的理念，都能唤起与居者情感上的共鸣。



# Sample of what is offered

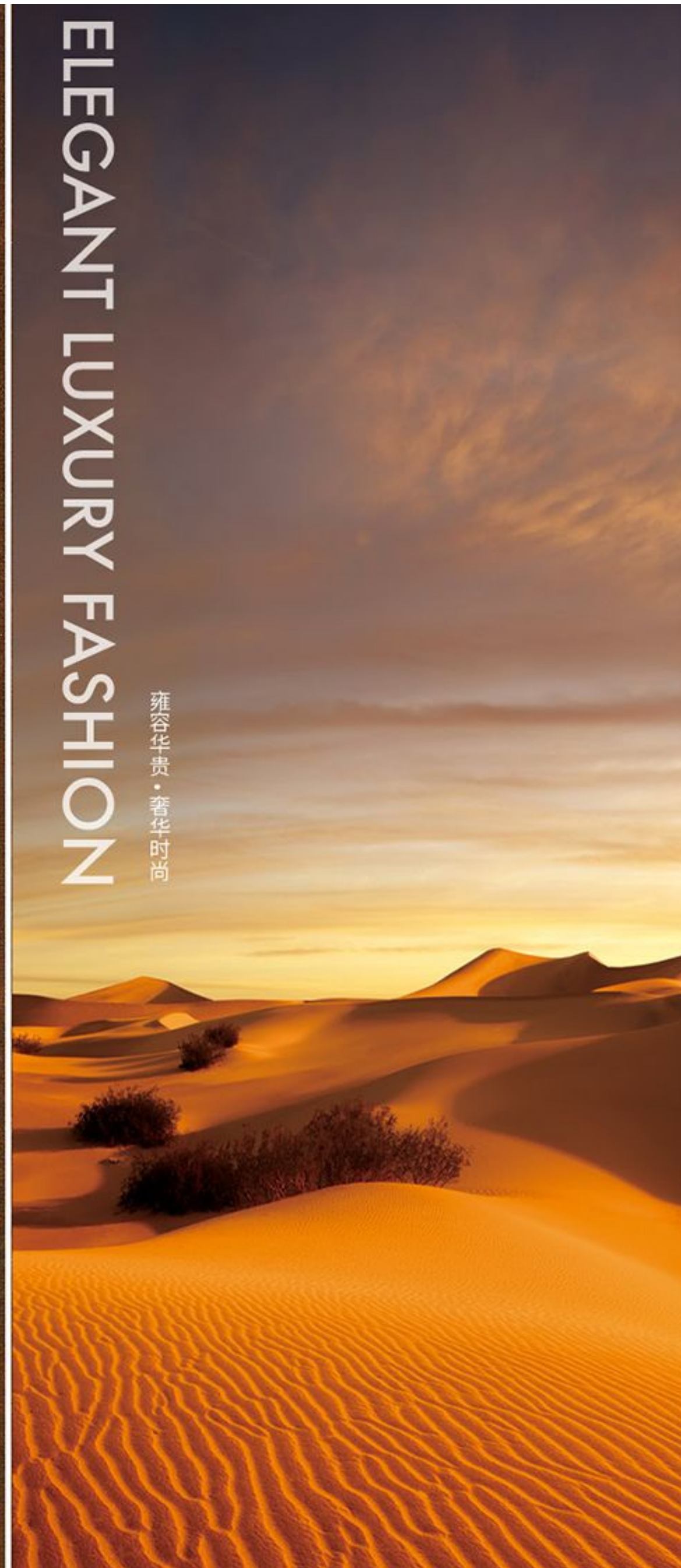


Sample of what is offered

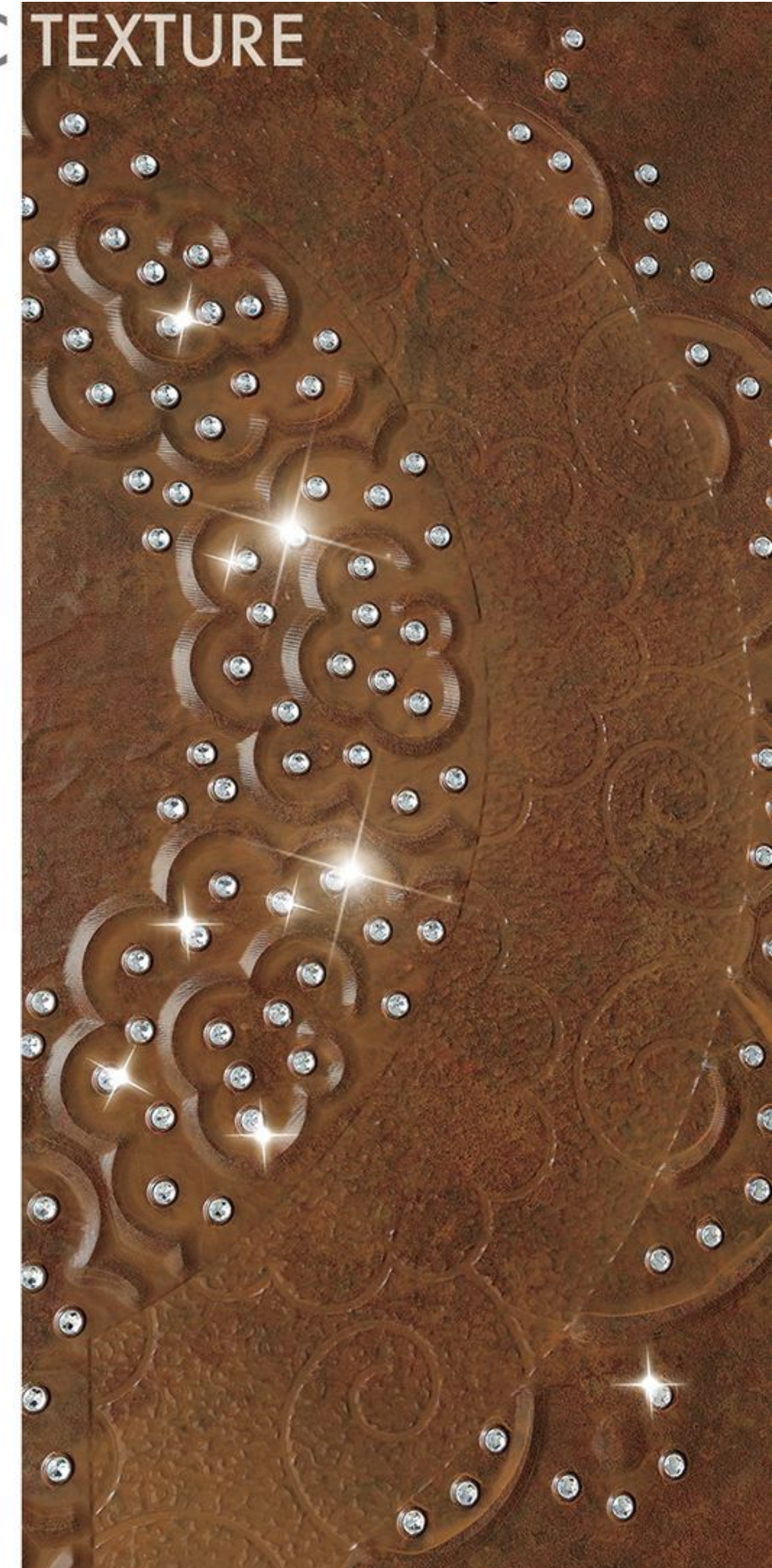
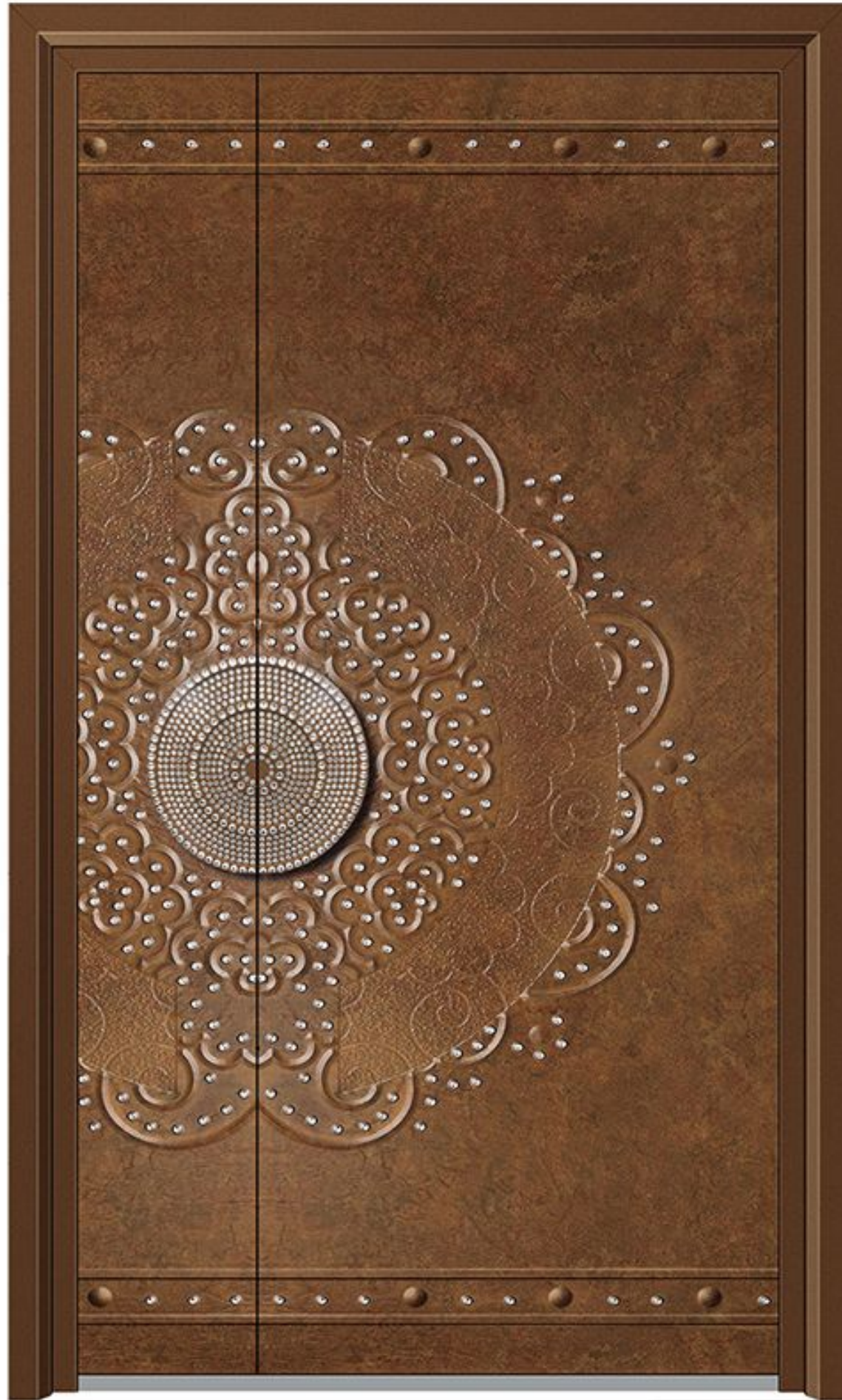
TO CREATE A CLASSIC



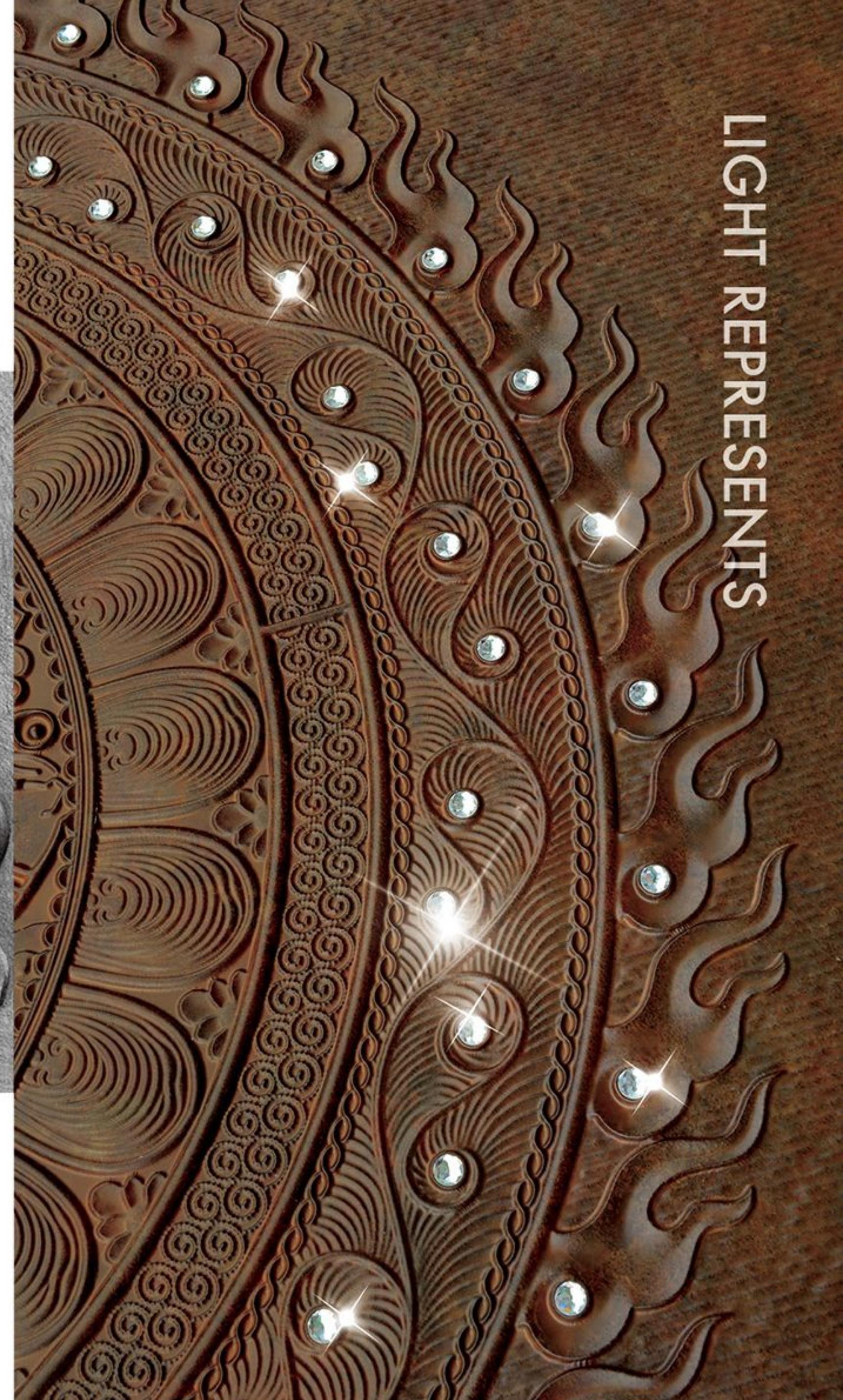
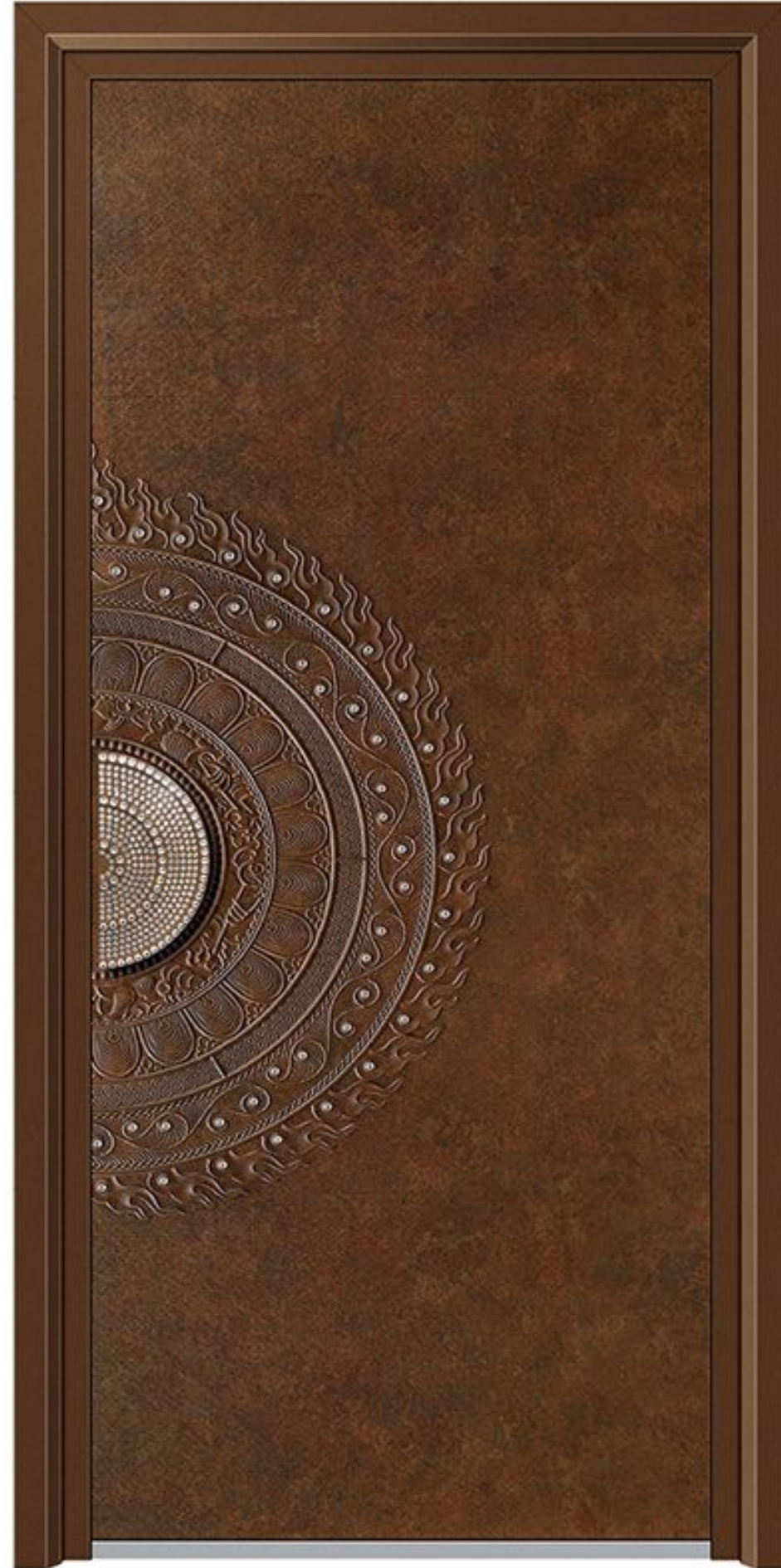
# Sample of what is offered



## AESTHETIC TEXTURE



# Sample of what is offered



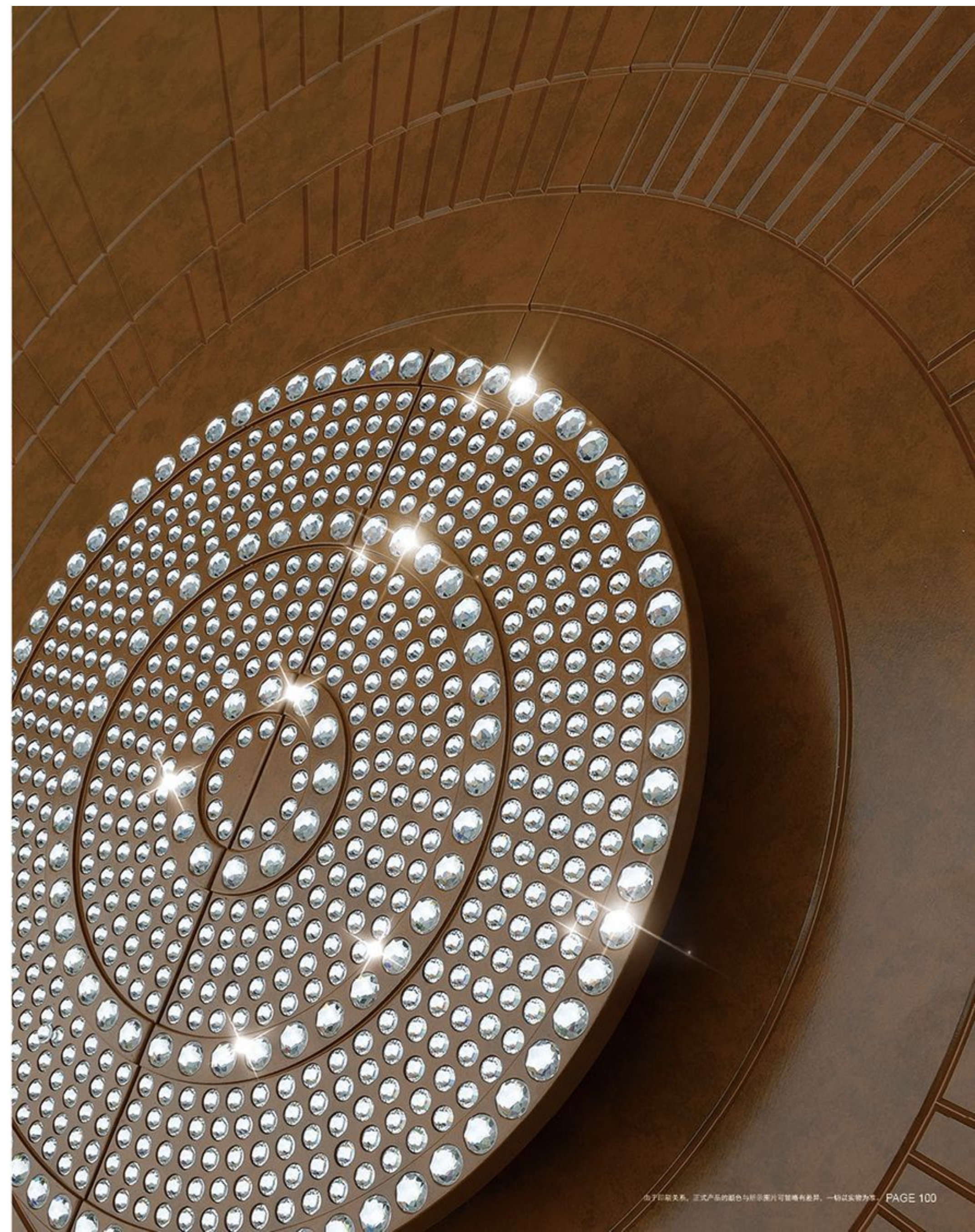
LIGHT REPRESENTS



## AESTHETIC TEXTURE

几何线条艺术造型  
创新演绎格调非凡的美学质感

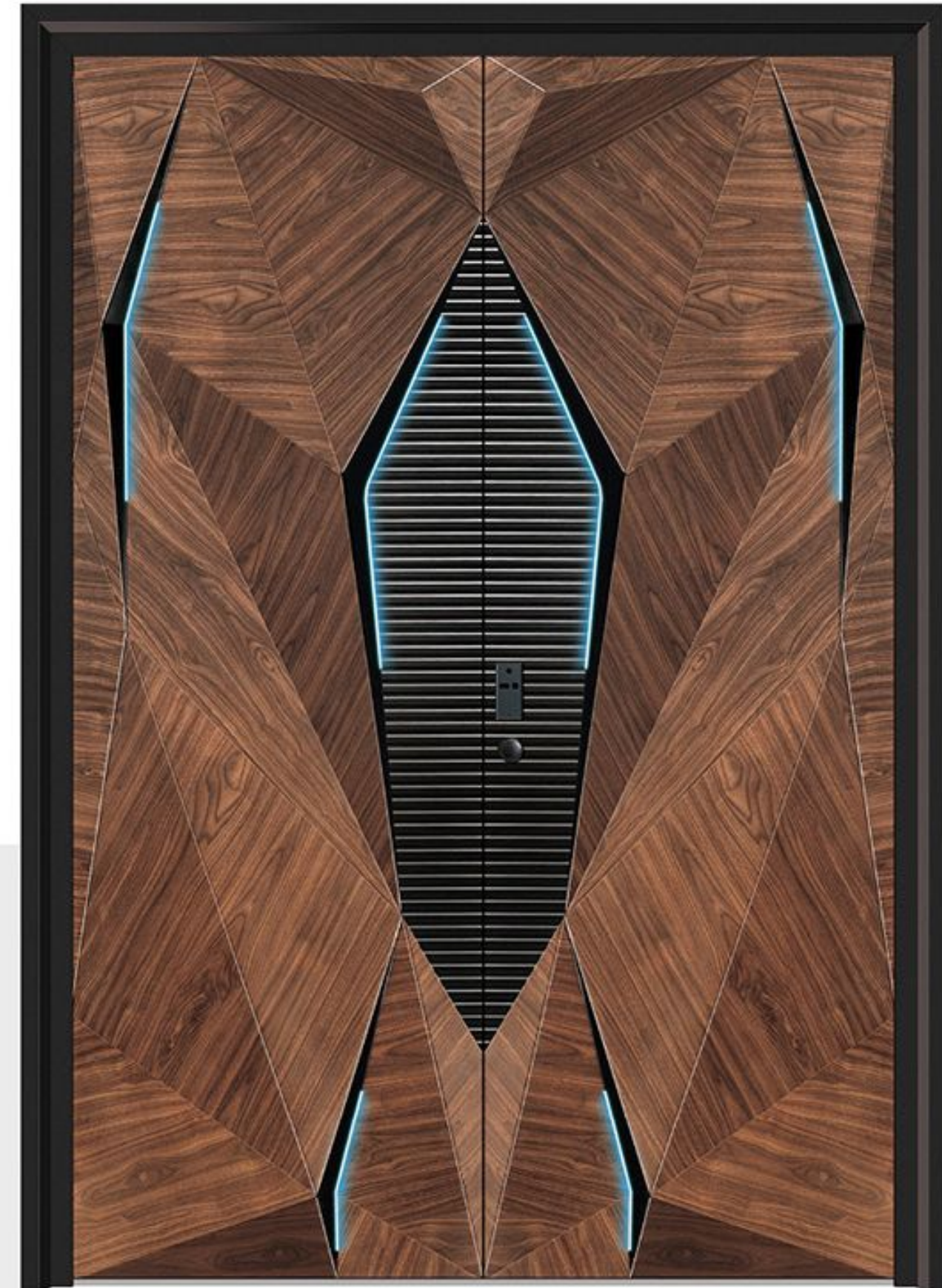
自然的肌理、先锋的设计、前瞻的灵感，光影于璀璨质感间流淌蔓延出万千想象，辉映居者理想中的色彩，为居者带来感官之悦；入户门作品设计无论是其卓越的品质，还是其创新的理念，都能唤起与居者情感上的共鸣。



# Sample of what is offered



BLACK AND GOLD



# Sample of what is offered



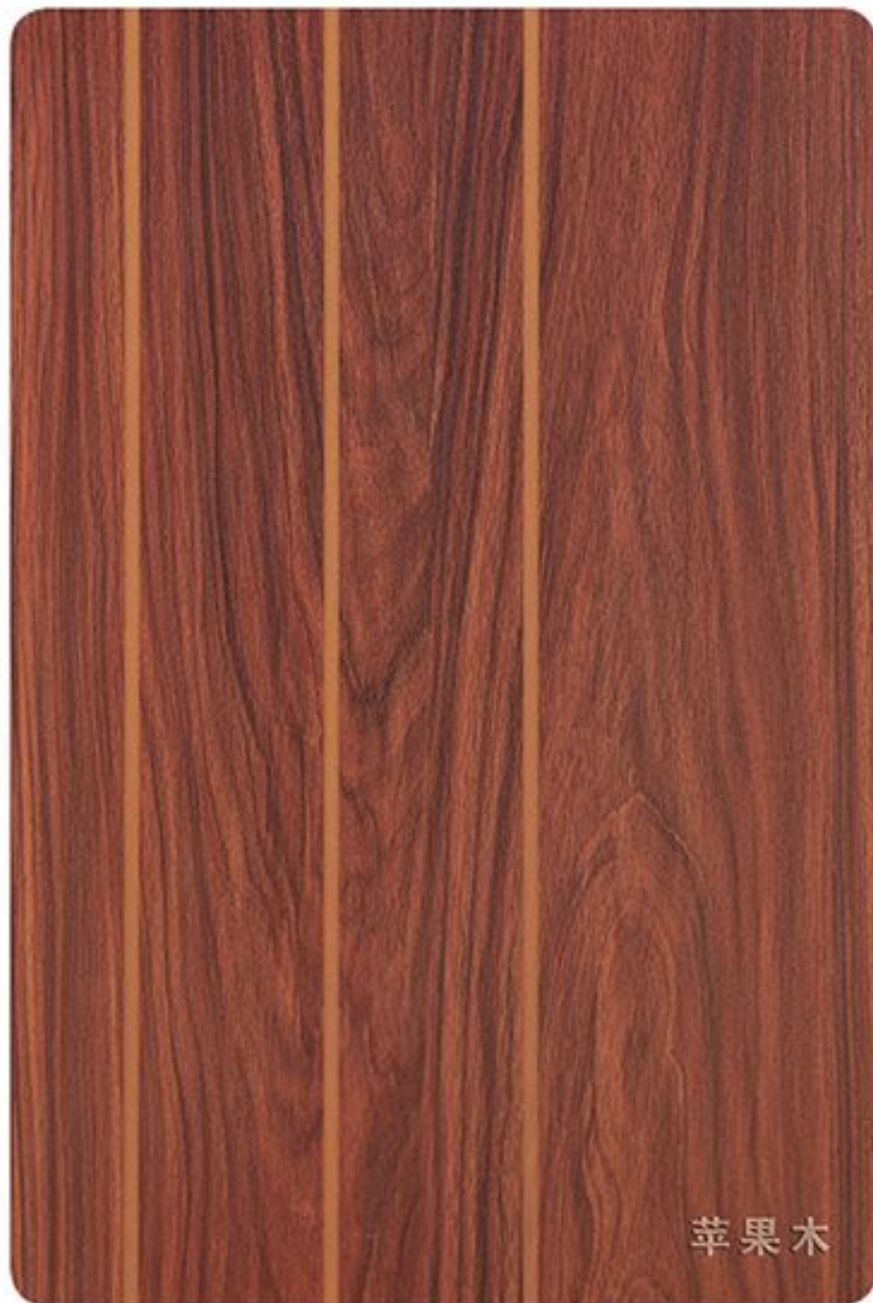
# Sample of what is offered





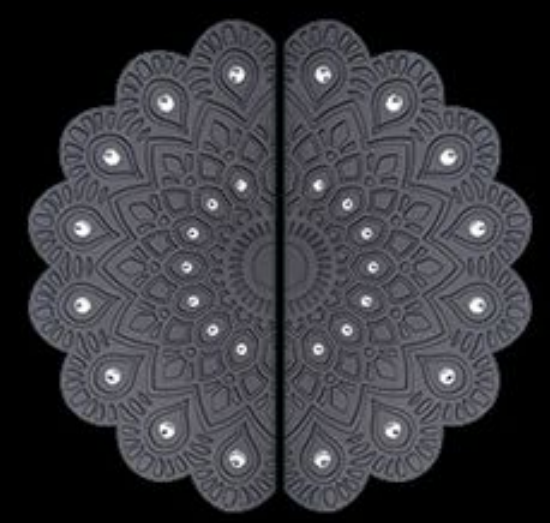
POETIC LANDSCAPE

# Sample of what is offered





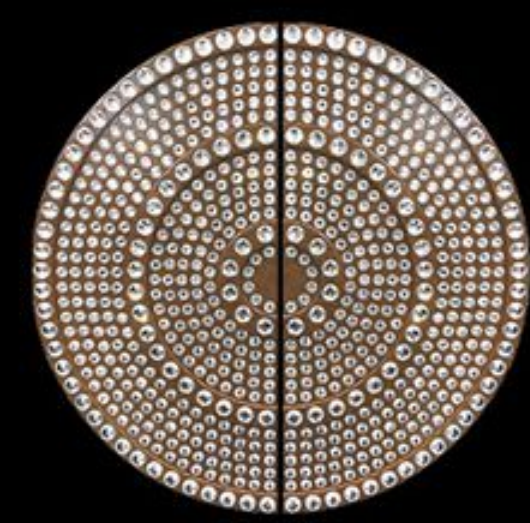
拉手 -11



拉手 -12



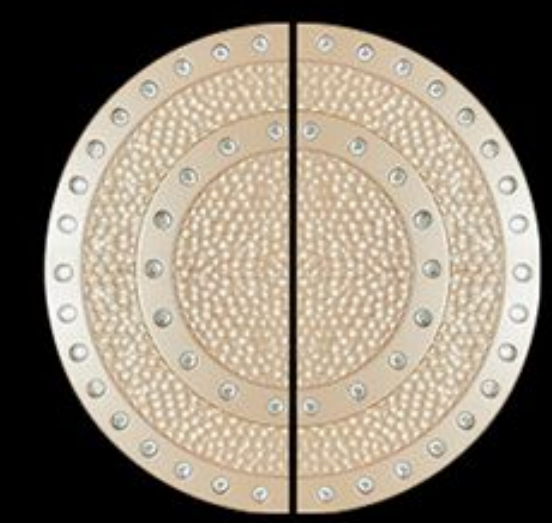
拉手 -13



拉手 -14



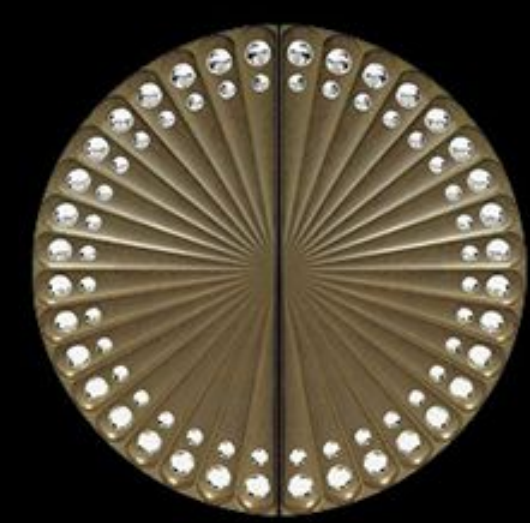
拉手 -15



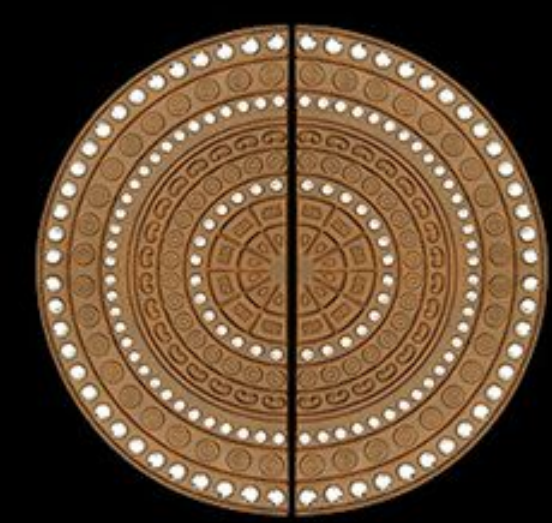
拉手 -16



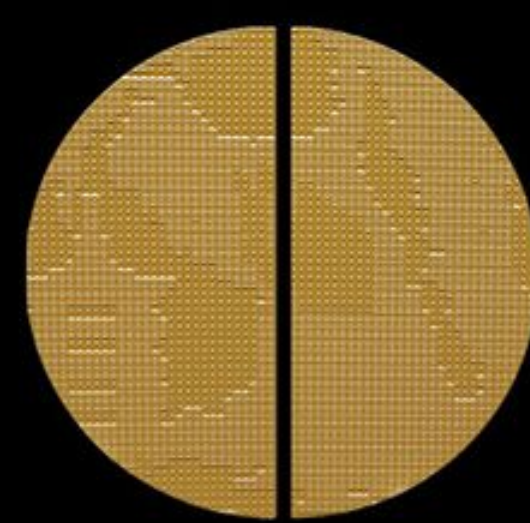
拉手 -17



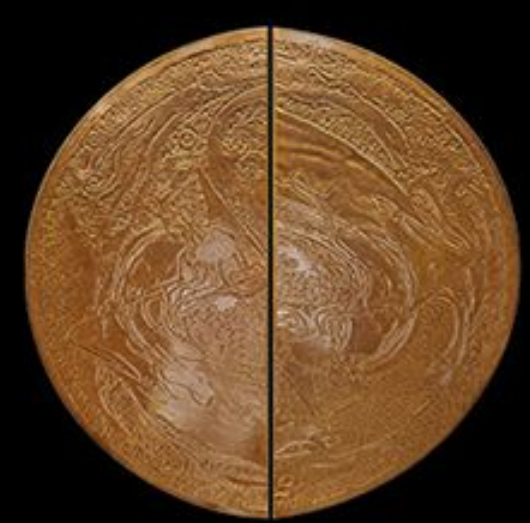
拉手 -18



拉手 -19



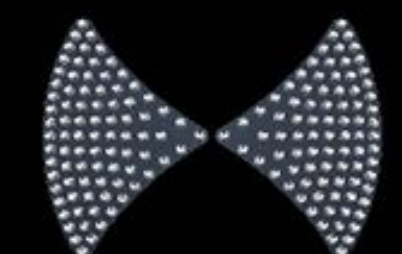
拉手 -20



拉手 -21



拉手 -22



拉手 -23



拉手 -24



拉手 -25

## AESTHETIC PRINCIPLE

门把手设计与门面融为一体  
体现了极简主义的美学原则