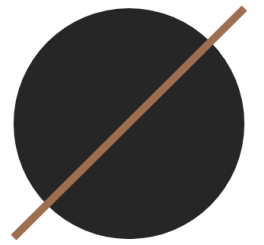


# Sample of what is offered



**SOLSTICE**  
INTERIOR





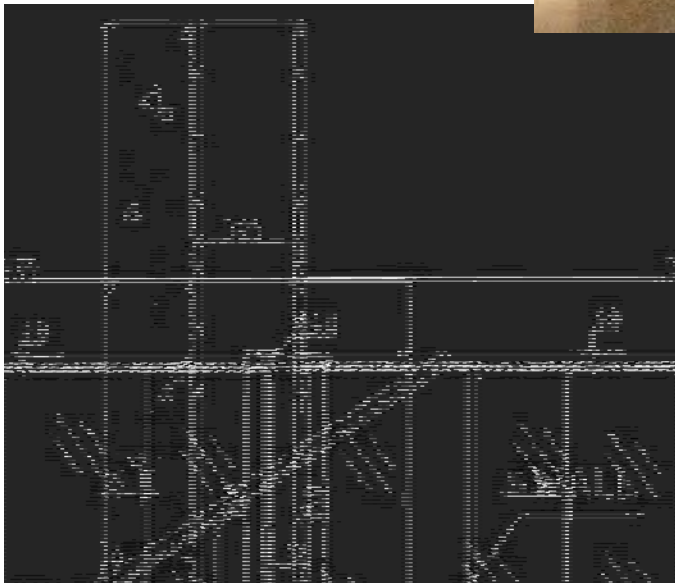
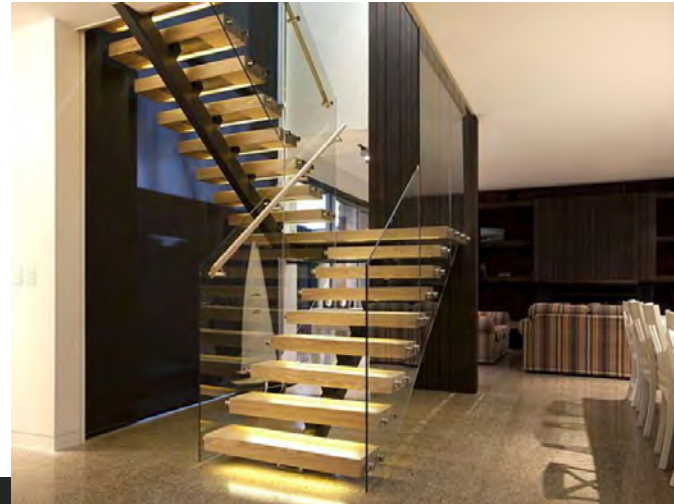
# Sample of what is offered

L Shape of  
Staircase



# Sample of what is offered

U Shape of Staircase

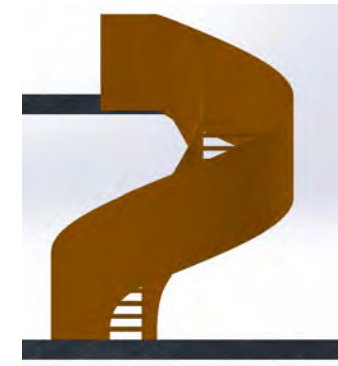
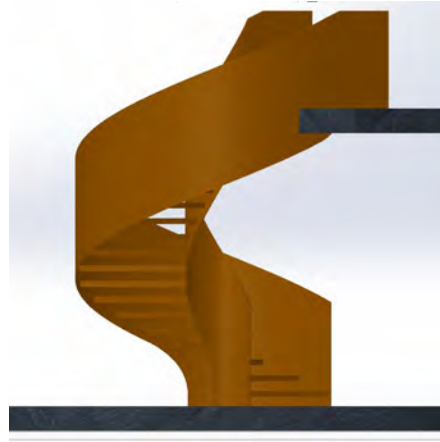
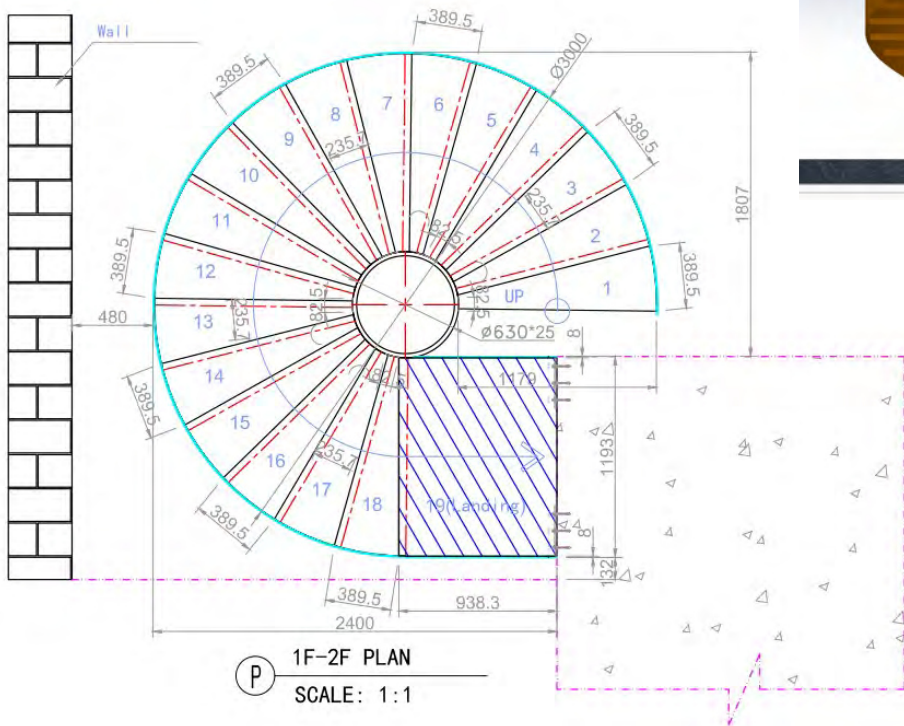


# Sample of what is offered

## Curved Staircase

Stair specification:

1. Floor to floor height: 3045mm ; Step riser: 160.3mm;  
Step: 19 ; Diameter:  $\varnothing 3000$ mm;
2. Center post:  $\varnothing 630 \times 25$ mm;
3. Railing : 8mm carbon steel with paint spraying;
4. Treads: 6mm carbon steel with paint spraying;
5. Railing height: H=950mm;



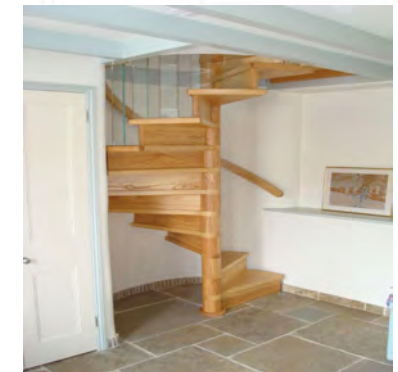
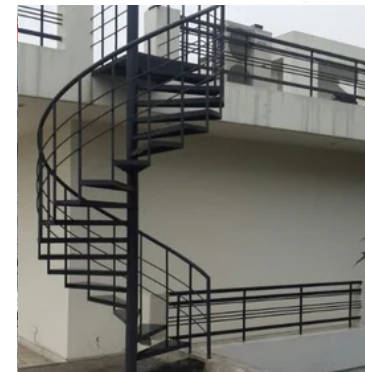
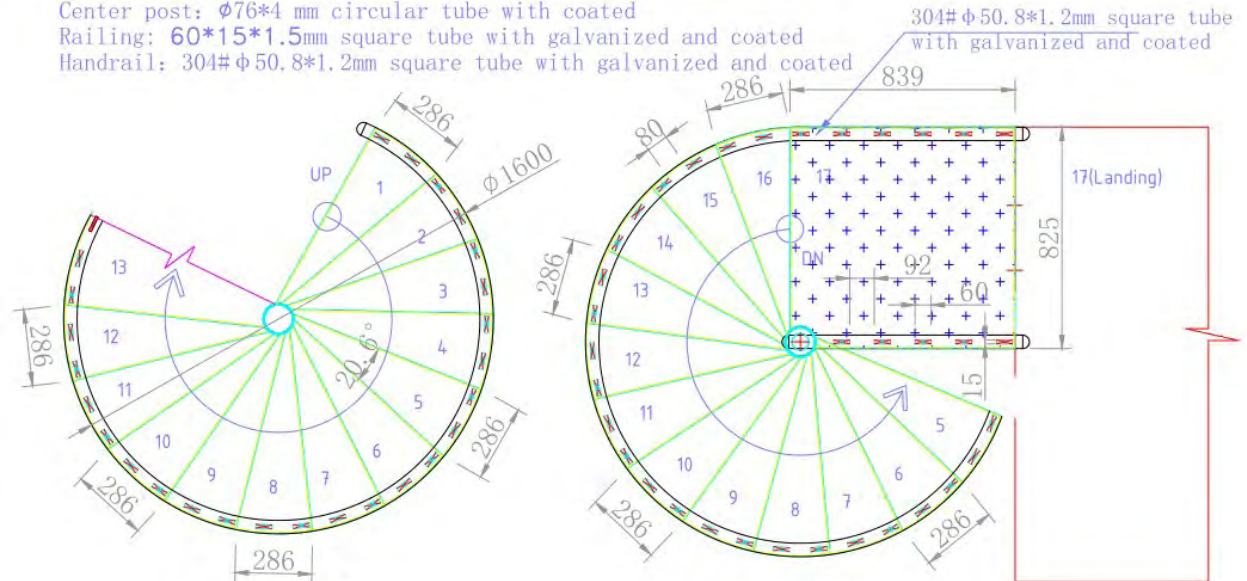
# Sample of what is offered

Curved Staircase



## Spiral Staircase

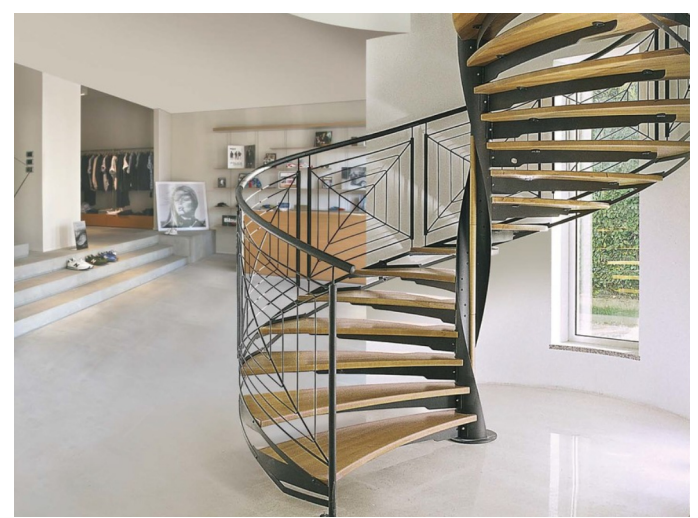
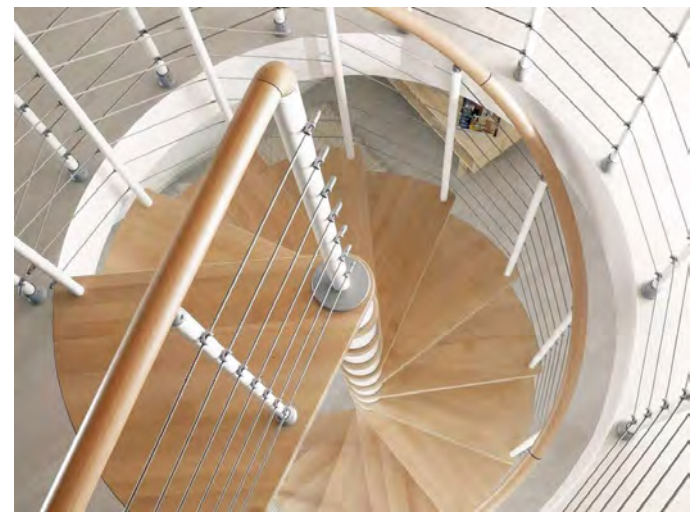
Floor height: 3005 mm Step : 17 steps Step riser: 176.8 mm  
Treads: 4 mm carton steel plate with galvanized and coated  
Outer post:  $\phi 114*4$ mm circular tube with galvanized and coated  
Center post:  $\phi 76*4$  mm circular tube with coated  
Railing:  $60*15*1.5$ mm square tube with galvanized and coated  
Handrail:  $304\# \phi 50.8*1.2$ mm square tube with galvanized and coated





# Sample of what is offered

## Spiral Staircase



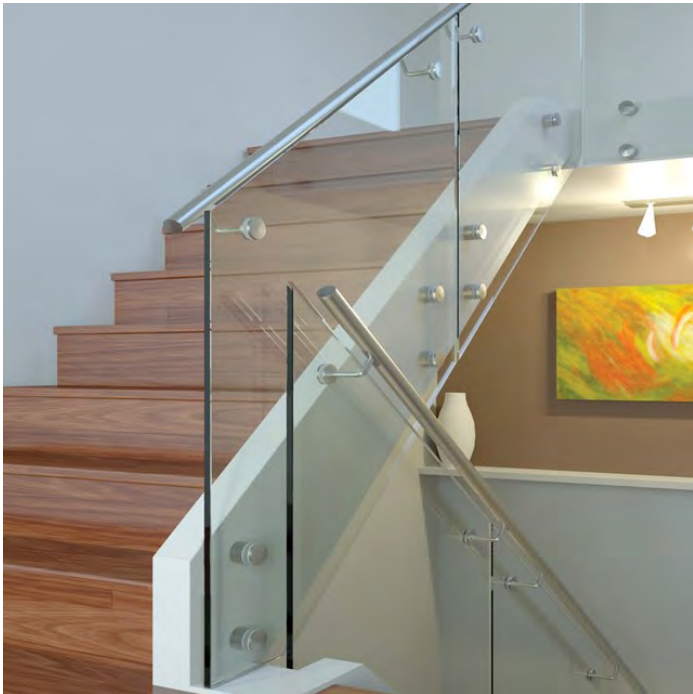
# Sample of what is offered

Spigot glass railing



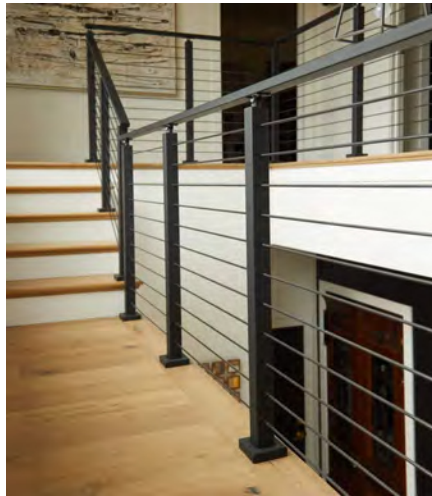
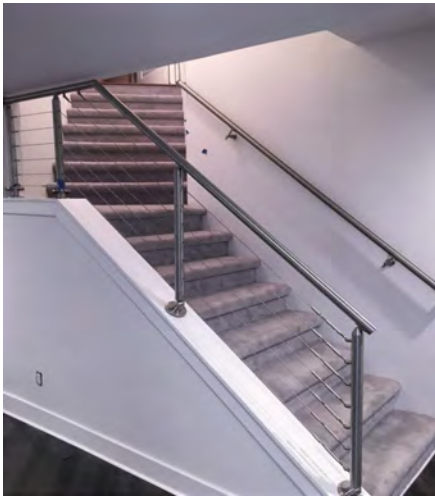
# Sample of what is offered

Standoff glass railing with stainless tube handrail.



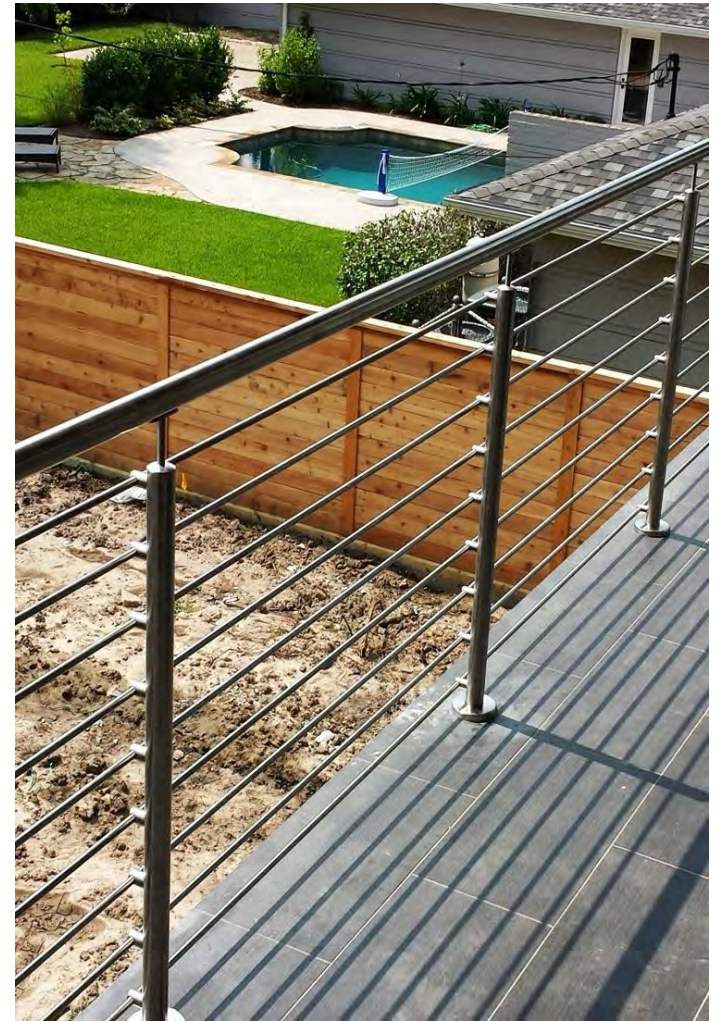
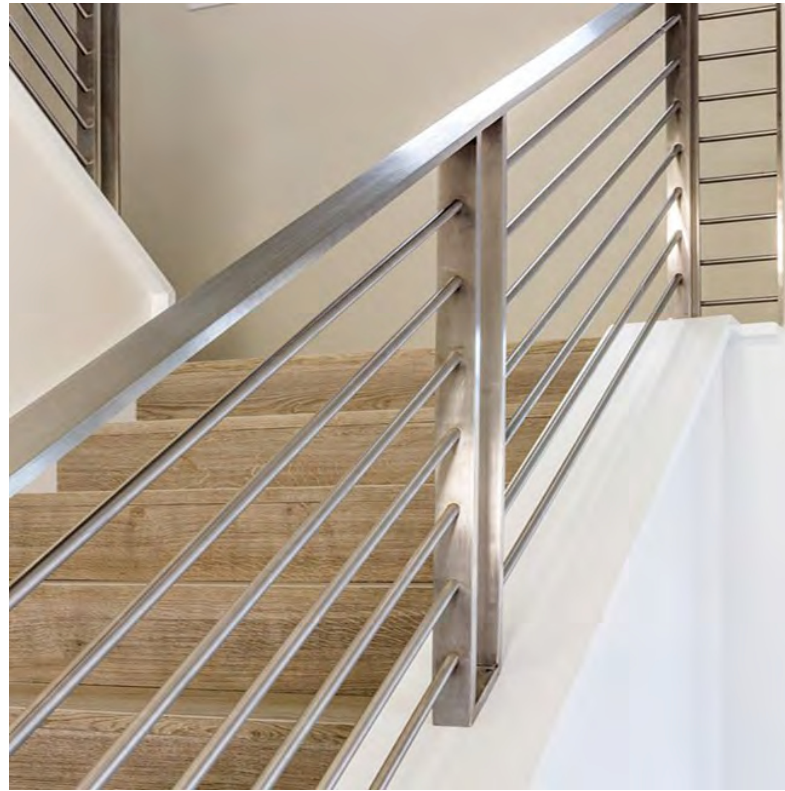
# Sample of what is offered

Cable railing



# Sample of what is offered

Rod railing



# Sample of what is offered

Wrought iron fence

